



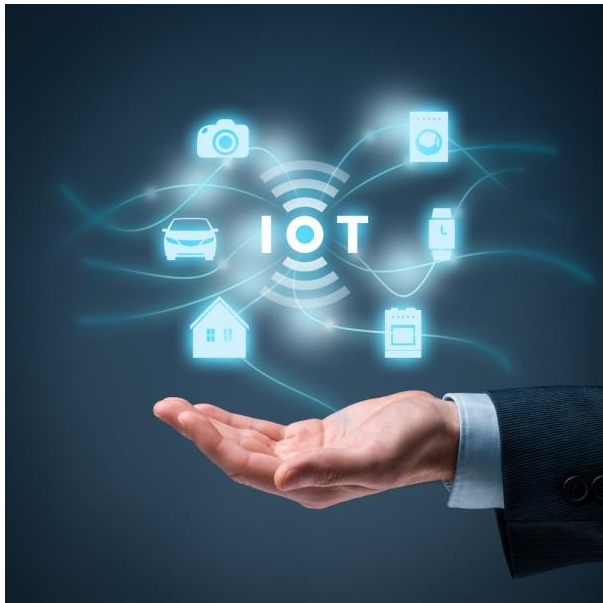
# Project on Automatic Door-Alert Module

**Apurva Raj**

B.Tech

CSE, 4<sup>th</sup> Sem.

R.V.S. College of Engineering and Technology

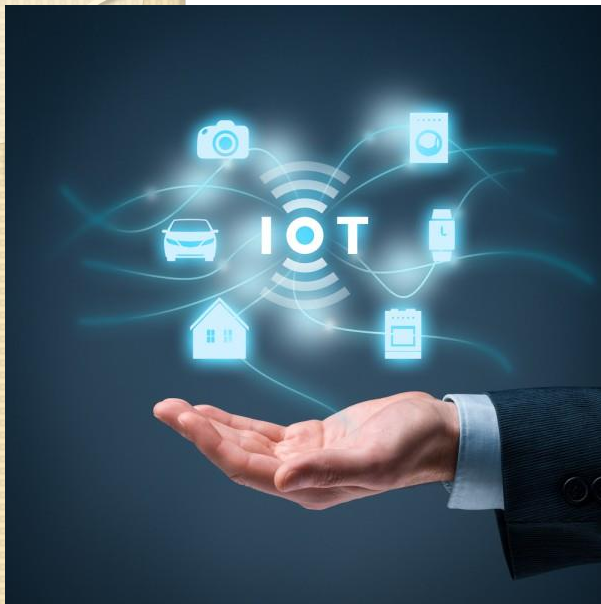


**A**UTOMATIC

**D**OOR **A**LERT

**M**ODULE



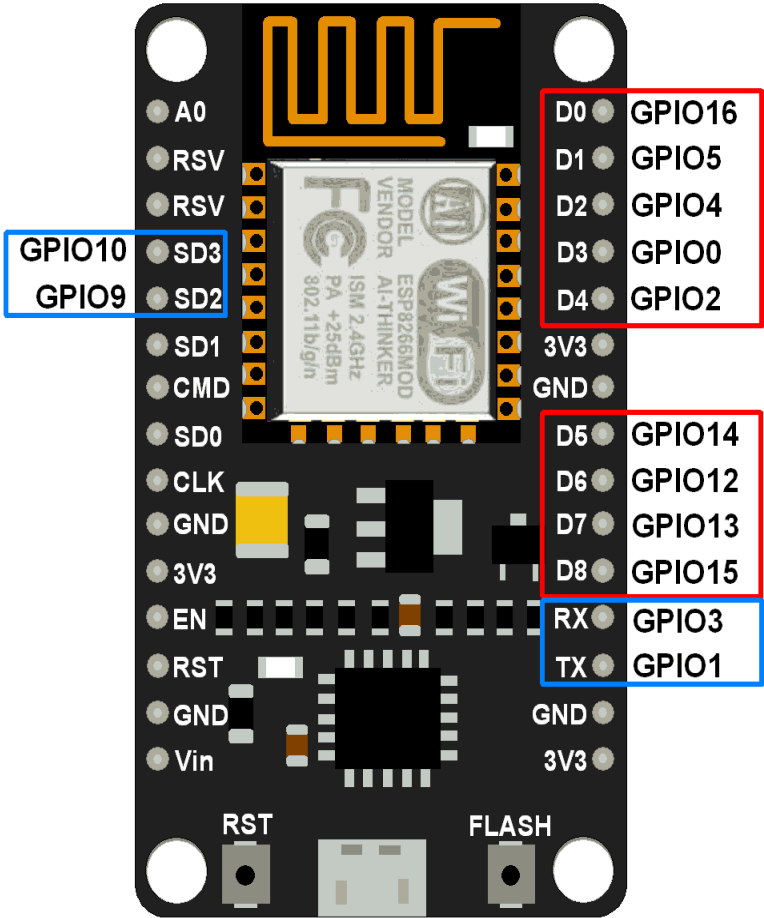
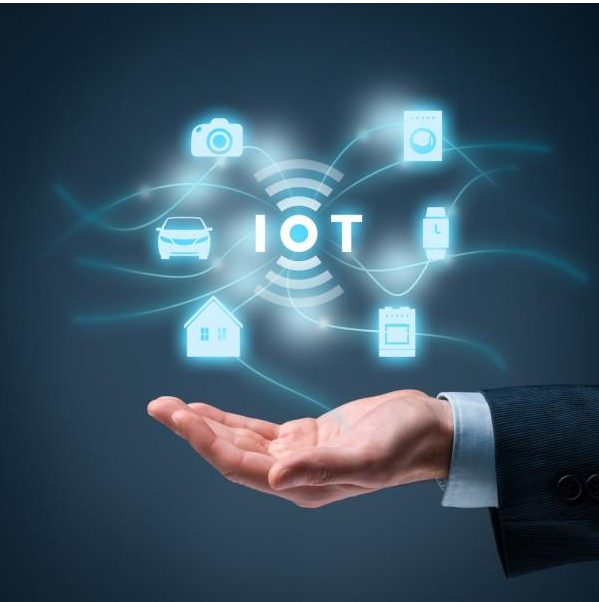


# COMPONENTS USED

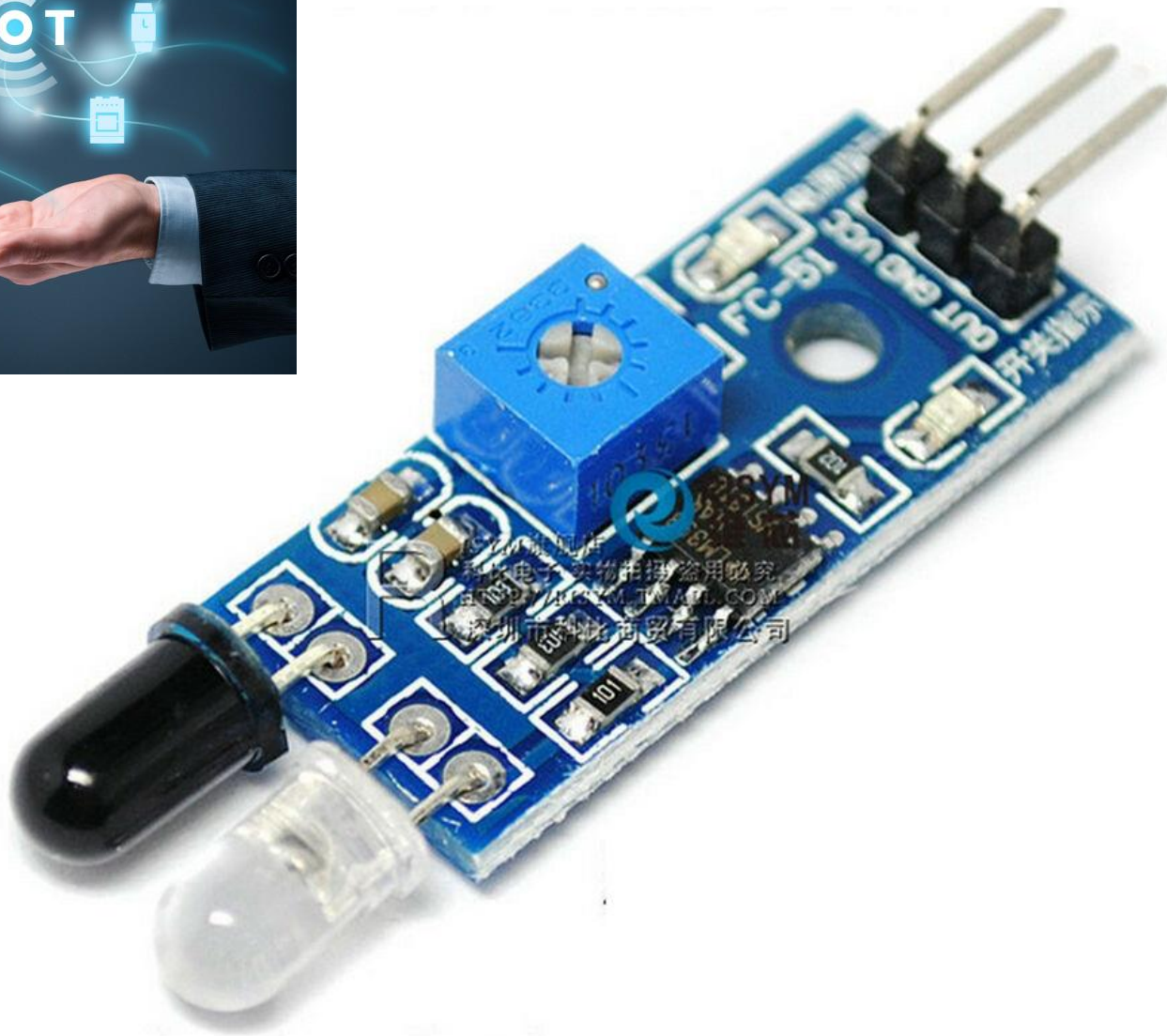
Following are the components which were used in making this project:

- ✓ Arduino NodeMCU
- ✓ IR Sensor
- ✓ USB Cable
- ✓ Power bank
- ✓ A smartphone
- ✓ Jumper Wires
- ✓ Breadboard
- ✓ WiFi Connectivity
- ✓ Blynk App

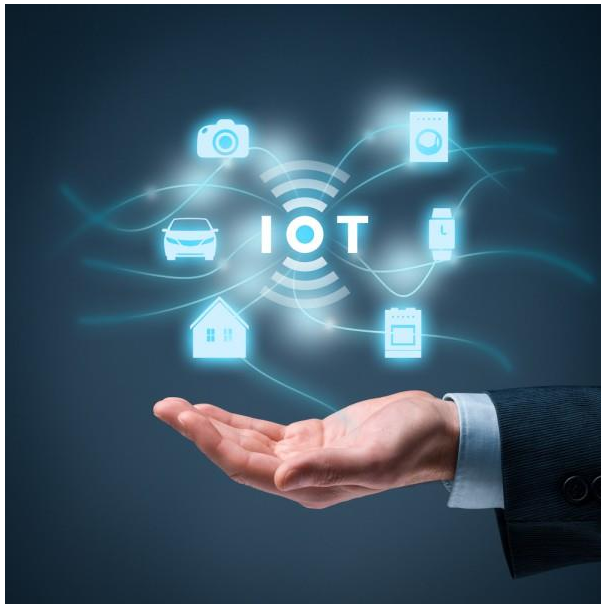
# ARDUINO NODEMCU



# IR SENSOR



# USB CABLE





# POWER BANK







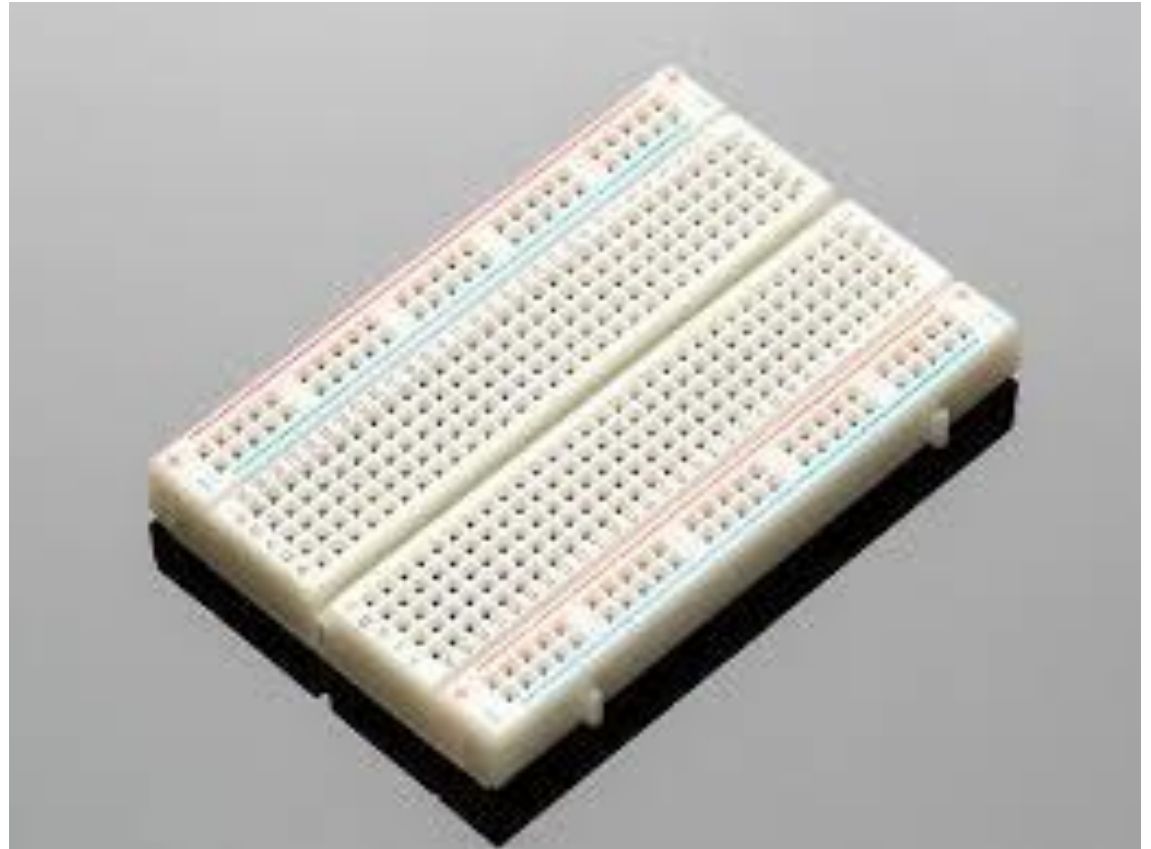
# SMARTPHONE



# JUMPER WIRES

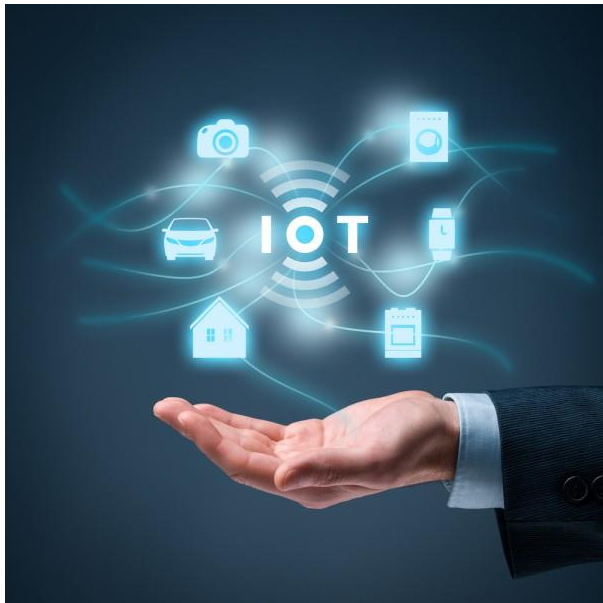


# BREADBOARD



# WiFi CONNECTIVITY





# BLYNK APP

